

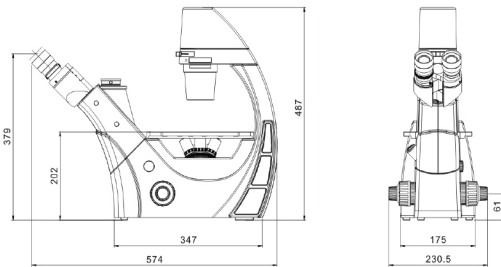
# invert

Laboratory Inverted Biological Microscope

## Invert specifications

Model	Invert
Optical System	Infinity color corrected optical system
Eyeiece	High eye-point plan eyepiece PL10X/22, field of view: 22mm. High eye-point plan eyepiece PL10X/22r, field of view: 22mm, with reticle. High eye-point plan eyepiece PL15X/16, field of view: 16mm
Objective	OLIPP2N long working distance plan positive phase contrast objective 4X, 10X, 20X, 40X
Nosepiece	Revolving quintuple nosepiece ( option: quadruple nosepiece )
Viewing Head	45° inclined gemel binocular head, interpupillary distance range: 54–75mm. 45° inclined gemel trinocular head, interpupillary distance range: 54–75mm. Fixed splitting ratio for binocular: trinocular= 80:20.
Stage	Fixed stage size: 250x160mm, slider clips, extension plate and coaxial moveable stage can be assembled.
Focusing adjustment	Coaxial focus system with up-limited and tension adjustment. Coarse range: 9mm, fine range: 0.2mm, fine precision: 0.002mm.
Attachable moveable stage	Coaxial focus system, range: 120x78mm, various of holders can be assembled.
Holder	Slides holder ( $\phi$ 54mm and 26.5x76.5mm ) Teraseki holder ( $\phi$ 65mm and 56x81.5mm ) $\phi$ 35mm Petri dish holder
Condenser	N.A.0.3 Koehler illumination condenser, with phase-adjustable slide plate, long working distance 72mm. The whole set can be rotated down.
Filter	$\phi$ 45 mm green interference filter, color temperature change filter, infrared eliminate filter
Illumination	5W warm color LED, 12V3.3A external transformer, intensity adjustable.

## Invert dimensions : mm



Llumins Optical Systems  
[www.llumins.co.za](http://www.llumins.co.za)  
 Tel: 27 (0)21 100 3052  
 Email: [info@llumins.co.za](mailto:info@llumins.co.za)



As technical improvement, manufacturer has right to make renovation in designing without notice

**Llumins Optics**  
 have passed the certificate:  
 ISO 9001  
 ISO 14001  
 ISO 13485



# invert

## Laboratory Inverted Biological Microscope

With ergonomic design, easy operation and an excellent price the INVERT is perfectly suitable for both tissue and living cell observation



[www.llumins.co.za](http://www.llumins.co.za)  
[info@llumins.co.za](mailto:info@llumins.co.za)



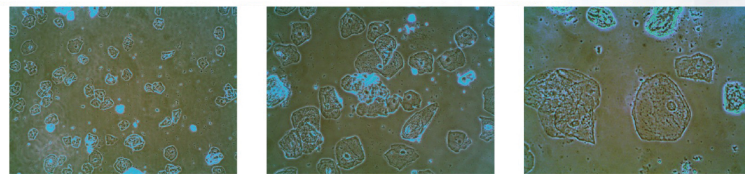
**In addition to its excellent pricing the Lumins Invert is highly recommended for its professional optical performance.**

With compact design and user-friendly interface, the Lumins Invert can detect cells rapidly and efficiently, perfect for routine daily work and dedicated research in the laboratory.

- Infinity colour corrected optical system with excellent optical performance, makes the image clear and bright.
- High contrast and low chromatic phase contrast highlights the cell borders and internal structure
- The compact ergonomic design saves desk space
- Precision fine focus and comfortable illumination adjustments helps the operator perform at their best.
- The delicate yet robust mechanical design ensures stability and makes the Lumins Invert your perfect professional partner

**Phase contrast observation**

Insert the phase contrast plate into the slot above the condenser. Phase contrast observation is available in combination with the phase contrast objectives. The Lumins Invert will present you with perfect images of unstained or low chromatic living cells.



Ph10x

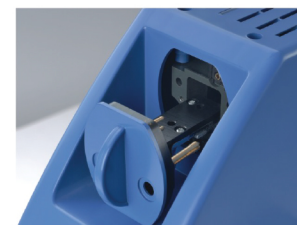
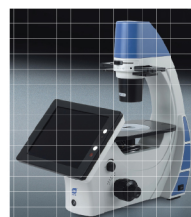
Ph20x

Ph40x



**Eyepiece**

Plan eyepieces with 22mm field of view are perfect for search and count. The high eye-point facilitates comfortable observation. An adjustable dioptre tailors eyepieces to the operator's eyes.



**Cassette type LED**

The 5W warm LED illumination has stable colour temperature, low electricity consumption, extended lifetime and adjustable intensity. The cassette design makes it easy to replace.



**Power Supply**

12V3.3A external transformer is attached to the back of the microscope. This convenient design facilitates the portability of this microscope.

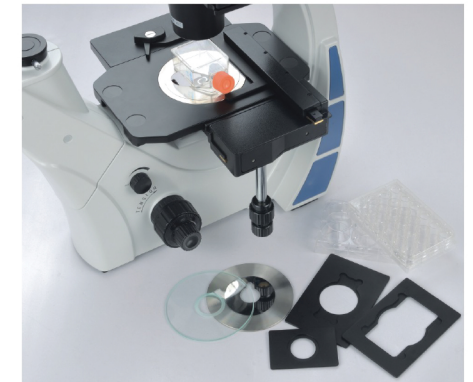


www.llumins.co.za  
info@llumins.co.za

**invert**  
Laboratory Inverted  
Biological Microscope

**Perfect details ensure a rapid and simple operation**

**Stage and Accessories**



The fixed large flat stage features advanced hard coating technology and is corrosion resistant. Extension plates, a moveable stage and various Petri dishes can be mounted.

**Objectives**



The OLIPP2 phase contrast objective has a large aperture and long working distance. The nosepiece can be rotated without the objectives touching the stage.

Series	Magnification	N.A.	W.D.	F.N.	Cover glass thickness	Immersion	Spring
PlanPH2 series	PlanPH2 4X	0.13	10.4	22	—	/	/
	PlanPH2 10x	0.25	6.9	22	1.2	/	/
	PlanPH2 20X	0.40	6.7	22	1.2	/	/
	PlanPH2 40x	0.65	3.0	22	1.2	/	Yes